



TIGER Drylac®  
Super Durable Powder Coating for Metal Facades & Steel Construction

## TIGER WORLDWIDE NETWORK



## Facade & Architectural Design Series 68 Metallics



Super Durable Powder Coating QUALICOAT Class II | GSB Master

Brilliant and super durable – metallic effects for sophisticated architecture

No matter where you use it – in the automotive sector, in interior design elements or for architectural projects: surfaces with decorative metallic effects have strong optical powers of attraction.

TIGER Drylac® Series 68 Metallics are designed for the supreme discipline of coatings: facade coatings that add special value to a building envelope. These highly weather-proof powder coatings satisfy the quality requirements of GSB International or the QUALICOAT quality label. They ensure that colors and effects continue to gleam after many years, right across all regions and climate zones.

current address and other information at  
[www.tiger-coatings.com](http://www.tiger-coatings.com)  
[www.tiger.archi](http://www.tiger.archi)



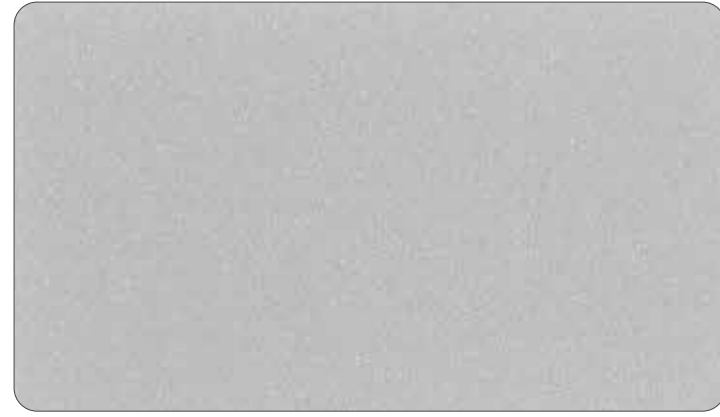
# Metallics 68

# TIGER Drylac®

Super Durable Powder Coating for Metal Facades & Steel Construction



All items available from stock



**approx. RAL 9006**  
TIGER Drylac® 68/90055 | MF/MA | A



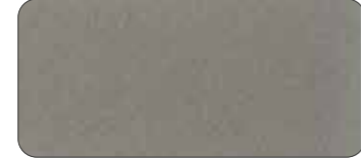
**Argento 611**  
TIGER Drylac® 68/90344 | ME/SGL | A



**Argento 618**  
TIGER Drylac® 68/90348 | ME/MA | A



**Argento 626**  
TIGER Drylac® 68/71425 | ME/MA | B



**Terra 615**  
TIGER Drylac® 68/71422 | MF/MA | B



**Terra 610**  
TIGER Drylac® 68/71415 | ME/MA | B



**Deore 004**  
TIGER Drylac® 68/60605 | ME/MA | B



**Terra 611**  
TIGER Drylac® 68/71414 | MF/MA | B



**Marrone 607**  
TIGER Drylac® 68/60525 | MF/MA | C



**approx. C34 Anodized**  
TIGER Drylac® 68/60306 | ME/MA | B



**Black Anodized 54B**  
TIGER Drylac® 68/80145 | ME/MA | B



**approx. C33 Anodized**  
TIGER Drylac® 68/60307 | ME/MA | B



**Iron Glimmer Effect approx. P7**  
TIGER Drylac® 68/80043 | MF/MA | C



**Mica 618**  
TIGER Drylac® 68/80255 | MF/MA | B



**Sparkling Iron Effect Medium**  
TIGER Drylac® 68/70186 | MF/MA | C

\*Do not use for primer and e-coat applications

ME/GL = metallic glossy | ME/SGL = metallic semi gloss | ME/MA = metallic smooth matte  
MF/MA = metallic fine texture matte



**Dark Blue-Grey Anodized B717**  
TIGER Drylac® 68/70763 | ME/MA | B



**Mica 614**  
TIGER Drylac® 68/80248 | MF/MA | B



**Mica 613**  
TIGER Drylac® 68/80245 | MF/MA | B



**Argento 623**  
TIGER Drylac® 68/90351 | MF/MA | B



**Argento 625**  
TIGER Drylac® 68/90355 | ME/SGL | B



**Medium Blue-Grey Anodized B715**  
TIGER Drylac® 68/70764 | ME/MA | B

**ONLINE VERSION: The colors/effects shown here will deviate from the original color/effect due to screen technology.**  
Prior to processing the appropriate Product Data Sheets and Technical Information Sheets must be consulted. Metallic effects; please observe the instructions for Application Categories A – D acc. to the Technical Information Sheet No. 44.



**approx. C32 Anodized**  
TIGER Drylac® 68/15069 | ME/MA | B



**Terra 609**  
TIGER Drylac® 68/71413 | ME/SGL | B



**Deore 619**  
TIGER Drylac® 68/90349 | ME/MA | C

**ONLINE VERSION: The colors/effects shown here will deviate from the original color/effect due to screen technology.**  
Prior to processing the appropriate Product Data Sheets and Technical Information Sheets must be consulted. Metallic effects; please observe the instructions for Application Categories A – D acc. to the Technical Information Sheet No. 44.



**Argento 620**  
TIGER Drylac® 68/90346 | ME/MA | B



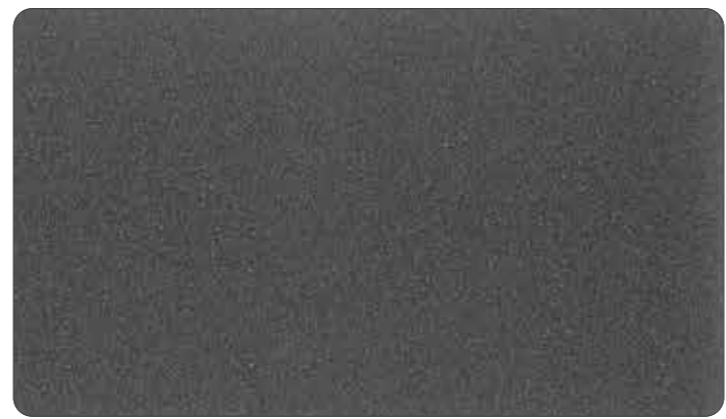
**Argento 617**  
TIGER Drylac® 68/90342 | MF/MA | B



**Champagne 611**  
TIGER Drylac® 68/90339 | ME/MA | B



**approx. C0 Anodized**  
TIGER Drylac® 68/90179 | ME/MA | B



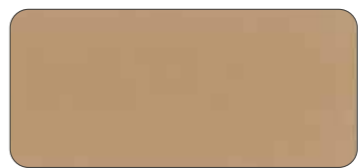
**approx. DB703**  
TIGER Drylac® 68/80045 | MF/MA | C



**Argento 621**  
TIGER Drylac® 68/90350 | ME/SGL | B



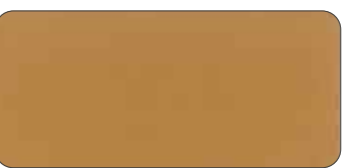
**approx. C31 Anodized\***  
TIGER Drylac® 68/90177 | ME/MA | B



**Deore 621**  
TIGER Drylac® 68/15155 | ME/GL | B



**Rust**  
TIGER Drylac® 68/60116 | MF/MA | C



**Deore 620**  
TIGER Drylac® 68/90363 | ME/MA | B



**Marrone 630**  
TIGER Drylac® 68/90354 | ME/SGL | B

**ONLINE VERSION: The colors/effects shown here will deviate from the original color/effect due to screen technology.**  
Prior to processing the appropriate Product Data Sheets and Technical Information Sheets must be consulted. Metallic effects; please observe the instructions for Application Categories A – D acc. to the Technical Information Sheet No. 44.