

TIGER WORLDWIDE NETWORK



OEM Color Card

Automotive OEM and Refurbishing Applications | Volume 1



Check out the TIGER Drylac® Webshop!
Order stock and standard products online!
For more information visit our website.

tiger-coatings.com



US/Canada: 1 (800) 243-8148
Mexico: 01 (800) 368-4437

999000180087 11/2022

Vol. 1

NORTH AMERICAN AUTOMOTIVE OEM

TIGER Drylac® is your one-stop-shop for automotive aftermarket powder coatings. We have prepared an extensive NEW product line for Automotive OEM Aftermarket that includes a wide variety of industry colors, gloss levels and surface finishes.

TIGER Drylac® has decades of experience in the automotive industry. After introducing the US market to the RAL color system in 1985, TIGER has done extensive work with the industries’ top manufacturers and the shops that supply them.

TIGER Drylac® has production facilities and R&D centers in North America, Europe and China. This allows us to transfer specifications and projects on a global level.

We have a robust list of approved products (including primers, basecoats and clear topcoats) for North American OEMs, including:

General Motors
Stellantis (Chrysler)

Paccar
Honda

Toyota
And more....

Our automotive product line covers functional parts, wheels, exterior trim and frame parts. Our specialized team of sales engineers, R&D chemists and application field specialists can run line audits, optimize coating systems to reduce rejection rates and improve efficiency in your production facility.



high gloss | 230/80170U2
GM 8555-BLACK HGL | gloss level 85-100



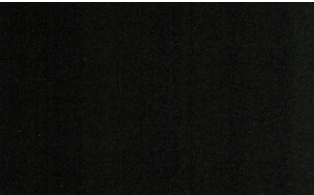
reduced gloss | 230/80780U1
GM 8555-BLACK | gloss level 80-90



semi gloss | 230/80760U1
GM o848-BLACK SGL | gloss level 55-65



satin | 230/80730U1
GM o848-BLACK SAT | gloss level 25-35



flat matte | 230/80710U1
GM o848-BLACK FMT | gloss level 9-12



fine texture | 230/80027U4
GM o848 BLACK FT



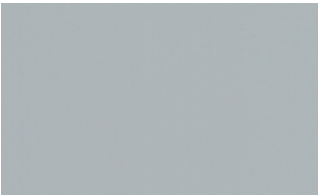
fine texture | 230/80027U1
AH-o38 GXH BLACK FT



semi gloss | 49/80033
PacCar Black Semigloss | gloss level 50-60



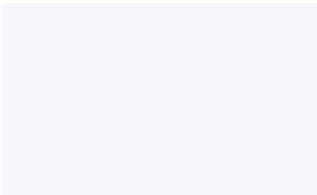
glossy | 200/80012U752
Wheel Black | gloss level 80-95



glossy | 200/700220520
Wheel Gray | gloss level 80-95



metallic | 230/90040U1
Cadillac Epernay



clear coat | 250/00108A142
Acrylic Clear



candy transparent | 223/80924
Candy Black Matte ▲



candy transparent | 223/80375
Candy Black HGL ▲



candy transparent | 223/20180
Triple Candy Brass ▲



candy transparent | 223/33340
Candy Apple Red ▲

Metallics

- * To increase durability and chemical resistance, TIGER Drylac® recommends the application of a clear topcoat for interior and exterior applications.
- ** To enhance the depth of the finish, TIGER Drylac® suggests the application of a clear top coat. **Recommended clear top coats | For interior:** Clear Flat Matte epoxy 69/00300 | **For exterior and interior:** Clear Matte acrylic hybrid 16/00030 | Clear Satin polyester TGIC 49/00280 | Clear Glossy polyester TGIC 49/00530 | Bengal Clear Glossy polyester TGIC 49/01234 | Clear Glossy polyester TGIC super durable 38/00001 | Anti-graffiti Clear Glossy polyester-urethane 44/00018 | Antimicrobial Clear 44/00100.
- *** Due to semi transparency of the product, the opacity of the color and finish will depend upon the substrate type and the film thickness. A film below 2.8 mils will exhibit limited hiding.

Candy Transparent

- ▲ Candy transparent finishes provide limited hiding, and the color will be influenced by the thickness of the coating or the color of the substrate/base coat. Candy transparent finishes have limited UV stability.



glossy | 223/90380
Quick Silver * | ***



glossy | 223/99999
Hot Rod Silver ***



glossy | 223/90450
Bass Boat Silver ** | ***



semi gloss | 230/93010
Speedway Silver



brilliant reflective | 223/95001
Chrome *



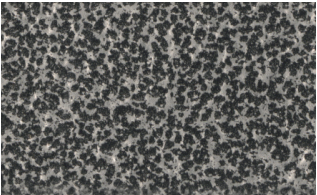
brilliant reflective | 223/91260
Reflective Silver *



glossy | 230/99010
Stainless Silver *



glossy | 230/90080
Star Silver



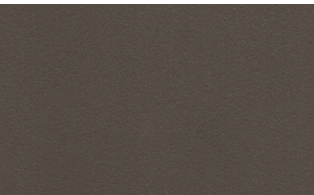
antique/vein | 220/90820
Suspension Silver



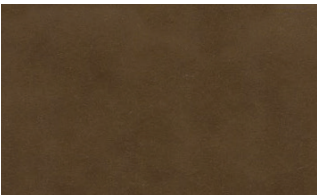
glossy | 230/18140
Pearl White ***



satin | 233/60014
Kansas City Bronze



semi matte | 233/60060
Boston Bronze



anodized | 252/68002
Las Vegas Bronze



satin | 230/68195
Hollywood Bronze



semi gloss | 230/62070
Chicago Bronze | gloss level 36-54



matte | 223/60160
Detroit Bronze | gloss level 20-30

Disclaimer

The colors featured in this color card are matched as accurately as possible to color standards. Some deviations from the standards might be noticeable due to texture and gloss level of the surface finish. Gloss level on metallic, fine and rough textured swatches cannot be accurately measured. Swatches have been matched to color standards at a **45-degree visual angle under a D65 Daylight** primary source. The swatches are to be considered as an indication only. In practice, discrepancy between the color swatch and the actual powder coating may arise. This is due to paper and ink limitations, the influence of light and heat during the color card production, as well as gloss level, substrate, surface variations, binder systems and pigments, coating thickness and cure oven conditions used during application. For an accurate color and finish assessment, it is recommended to obtain a powder coated sample panel from TIGER Drylac®.



DIGITAL VERSION: The colors/effects shown here will deviate from the original color/effect due to screen technology.