



Drylac®
Powder Coatings

NEW 3D Metallics

Locally made in Series 138!

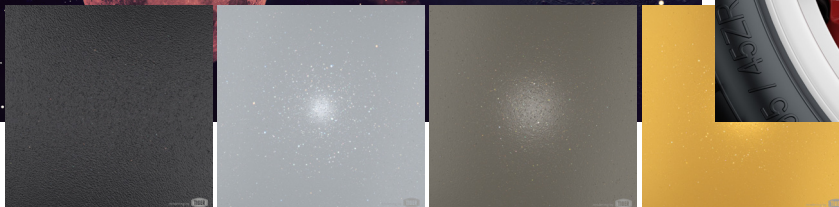
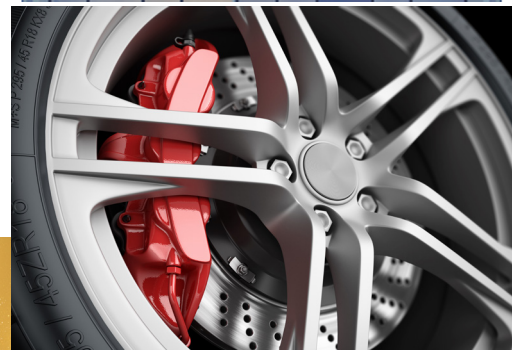
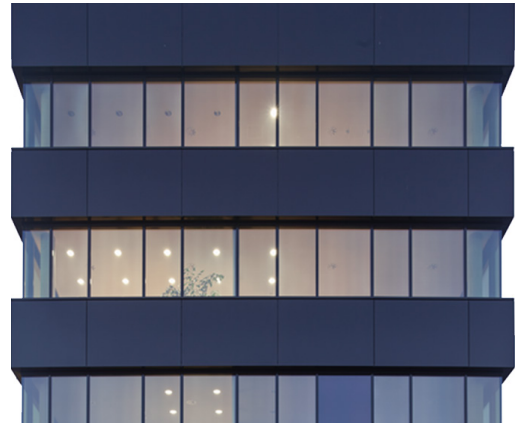
Introducing our new Series 138 3D Metallics where cutting-edge 3D Metallic technology meets exceptional product chemistry. Locally produced for fast lead times. Our 3D metallics deliver a stunning, wet paint-like effect with incredible depth and brightness, all in one coat and TGIC-Free!

Key Features & Benefits:

- Outstanding weather & UV resistance
- AAMA 2604 compliant
- Smooth flow & excellent storage stability
- Energy & time savings can be achieved by adjustable cure window
- Underwriter Laboratories approved (UL)

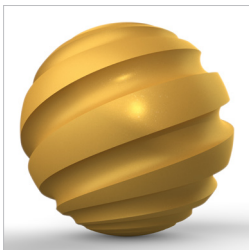
Ideal for

- Metal façades
- Stadium seating
- Residential windows & doors
- Patio furniture
- Railings & playground equipment
- Automotive applications



3D Metallics Available 138 Products

Semi Gloss



138/90420
Deore 3806
Metallic Smooth / Semi Gloss



138/10460
Bianco 3801
Metallic Smooth / Semi Gloss



138/10455
Bianco 3802
Metallic Smooth / Semi Gloss



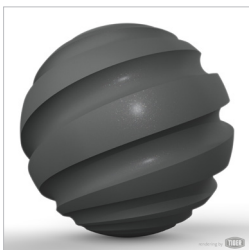
138/15185
Marrone 3801
Metallic Smooth / Semi Gloss



138/80348
Mica 3801
Metallic Smooth / Semi Gloss



138/90466
Argento 3801
Metallic Smooth / Semi Gloss



138/71806
Argento 3806
Metallic Smooth / Semi Gloss

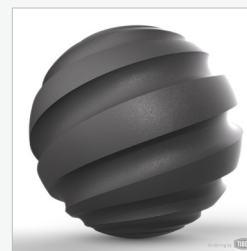
Fine Texture Flat Matte



138/80347
Mica 3802
Metallic Fine Texture / Flat Matte



138/80363
Mica 3806
Metallic Fine Texture / Flat Matte



138/72231
Argento 3808
Metallic Fine Texture / Flat Matte



138/71815
Terra 3802
Metallic Fine Texture / Flat Matte

Matte



138/90460
Deore 3804
Metallic Smooth / Matte



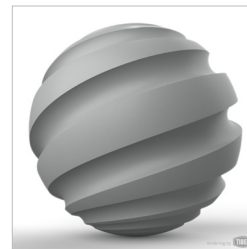
138/60820
Marrone 3808
Metallic Smooth / Matte



138/15190
Champagne 3803
Metallic Smooth / Matte



138/71810
Terra 3803
Metallic Smooth / Matte



138/90470
Argento 3804
Metallic Smooth / Matte



138/71811
Argento 3803
Metallic Smooth / Matte



138/60806
Marrone 3802
Metallic Smooth / Matte



138/80343
Argento 3802
Metallic Smooth / Matte



138/80367
Mica 3804
Metallic Smooth / Matte



138/60808
Marrone 3804
Metallic Smooth / Matte

* The second digit of 3D Metallic product names produced in Series 138 has been adjusted from 6 (in Series 68) to 8 in order to help distinguish between the two series. Color, effect, and gloss will be equivalent.

** Please refer to the Product Data Sheet for detailed curing parameters

For the most up-to-date product
selection & information scan this code:



999000280087