



Drylac®
Powder Coatings

Facade & Architectural Design

Series 68 | 3D Metallics



Super Durable Powder Coating QUALICOAT Class II | GSB Master
Actual Powder Coated Samples

3D Metallics

68

TIGER Drylac® 3D Metallics

A new Dimension in Effect Powder Coatings



NEW!

Bianco 3603
TIGER Drylac® 68/10605 | MF/MA | A

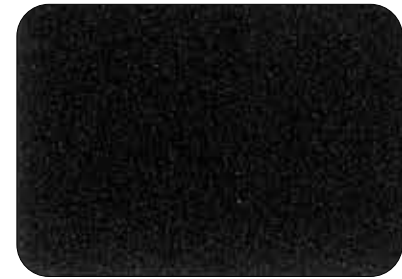
NEW!

Bianco 3604
TIGER Drylac® 68/72234 | MF/MA | A

Mica 3601
TIGER Drylac® 68/80348 | ME/SGL | A

TRANSCENDENTAL

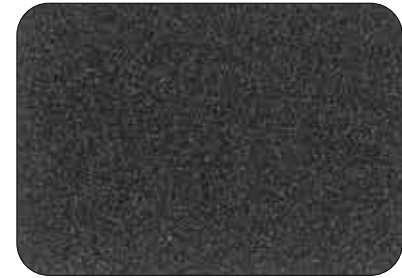
Actual Powder Coated Samples



Mica 3602
TIGER Drylac® 68/80347 | MF/MA | A



Argento 3608
TIGER Drylac® 68/72231 | MF/MA | A



Mica 3603
TIGER Drylac® 68/80345 | ME/MA | A



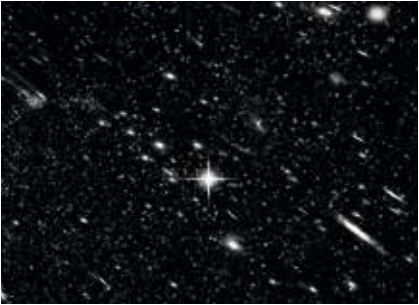
Argento 3602
TIGER Drylac® 68/80343 | ME/MA | A



Argento 3601
TIGER Drylac® 68/90466 | ME/SGL | A



Argento 3603
TIGER Drylac® 68/71811 | ME/MA | A



Mica 3604
TIGER Drylac® 68/80367 | ME/MA | A

ME/GL = metallic glossy | ME/SGL = metallic semi gloss | ME/MA = metallic matte | MF/MA = metallic fine texture matte | Prior to processing the appropriate product data sheets and technical information sheets must be consulted. **Application Categories A – D acc. to the Technical Information Sheet No. 44. All items available from stock**

Products marked with RED text: Limited stock is available, please consult the stock indicator on our Webshop or contact TIGER at 1 (800) 243-8148. Once stock is depleted, product will be moved to Custom Order and minimum quantities of 500 kg/1,100 lb will apply.

TIGER Drylac® 3D Metallics

A new Dimension in Effect Powder Coatings

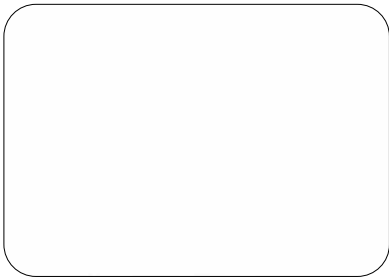


COSMIC

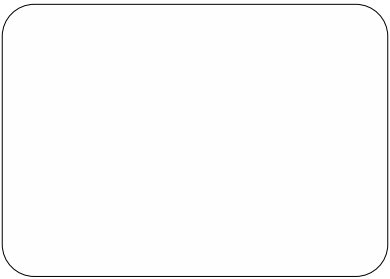
NEW!

Highland 3601
TIGER Drylac® 68/30394 | MF/MA | A

Actual Powder Coated Samples



Bianco 3602
TIGER Drylac® 68/10455 | ME/SGL | A



Bianco 3601
TIGER Drylac® 68/10460 | ME/SGL | A



Argento 3604
TIGER Drylac® 68/90470 | ME/MA | A



Argento 3606
TIGER Drylac® 68/71806 | ME/SGL | A



Mica 3606
TIGER Drylac® 68/80363 | MF/MA | A



Mica 3605
TIGER Drylac® 68/80405 | ME/MA | A



Argento 3609
TIGER Drylac® 68/72233 | MF/MA | A



Products marked with RED text: Limited stock is available, please consult the stock indicator on our Webshop or contact TIGER at 1 (800) 243-8148. Once stock is depleted, product will be moved to Custom Order and minimum quantities of 500 kg/1,100 lb will apply.

ME/GL = metallic glossy | ME/SGL = metallic semi gloss | ME/MA = metallic matte | MF/MA = metallic fine texture matte | Prior to processing the appropriate product data sheets and technical information sheets must be consulted. **Application Categories A – D acc. to the Technical Information Sheet No. 44. All items available from stock**

TIGER Drylac® 3D Metallics

A new Dimension in Effect Powder Coatings



NEW!



Argento 3607
TIGER Drylac® 68/72230 | MF/MA | A



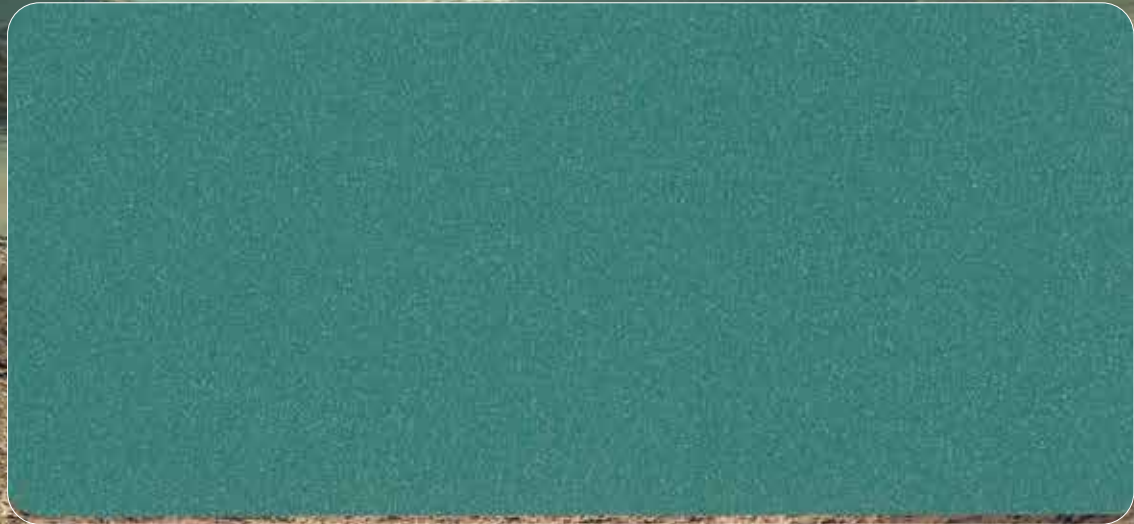
Azzurro 3603
TIGER Drylac® 68/40411 | MF/MA | A

NEW!



Azzurro 3601
TIGER Drylac® 68/40340 | ME/MA | A

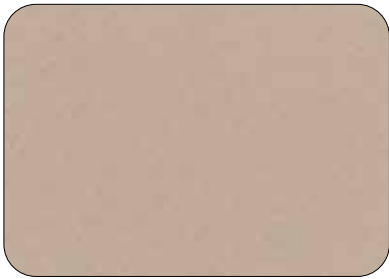
INTERSTELLAR



NEW!

Highland 3602
TIGER Drylac® 68/50396 | MF/MA | A

Actual Powder Coated Samples



Champagne 3601
TIGER Drylac® 68/15210 | ME/MA | A

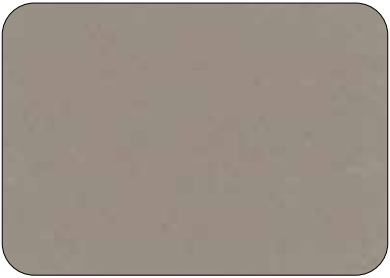


NEW!

Champagne 3604
TIGER Drylac® 68/15250 | MF/MA | A



Terra 3601
TIGER Drylac® 68/15195 | MF/MA | A



Champagne 3603
TIGER Drylac® 68/15190 | ME/MA | A



Champagne 3602
TIGER Drylac® 68/15200 | ME/MA | A



Terra 3602
TIGER Drylac® 68/71815 | MF/MA | A



Terra 3603
TIGER Drylac® 68/71810 | ME/MA | A

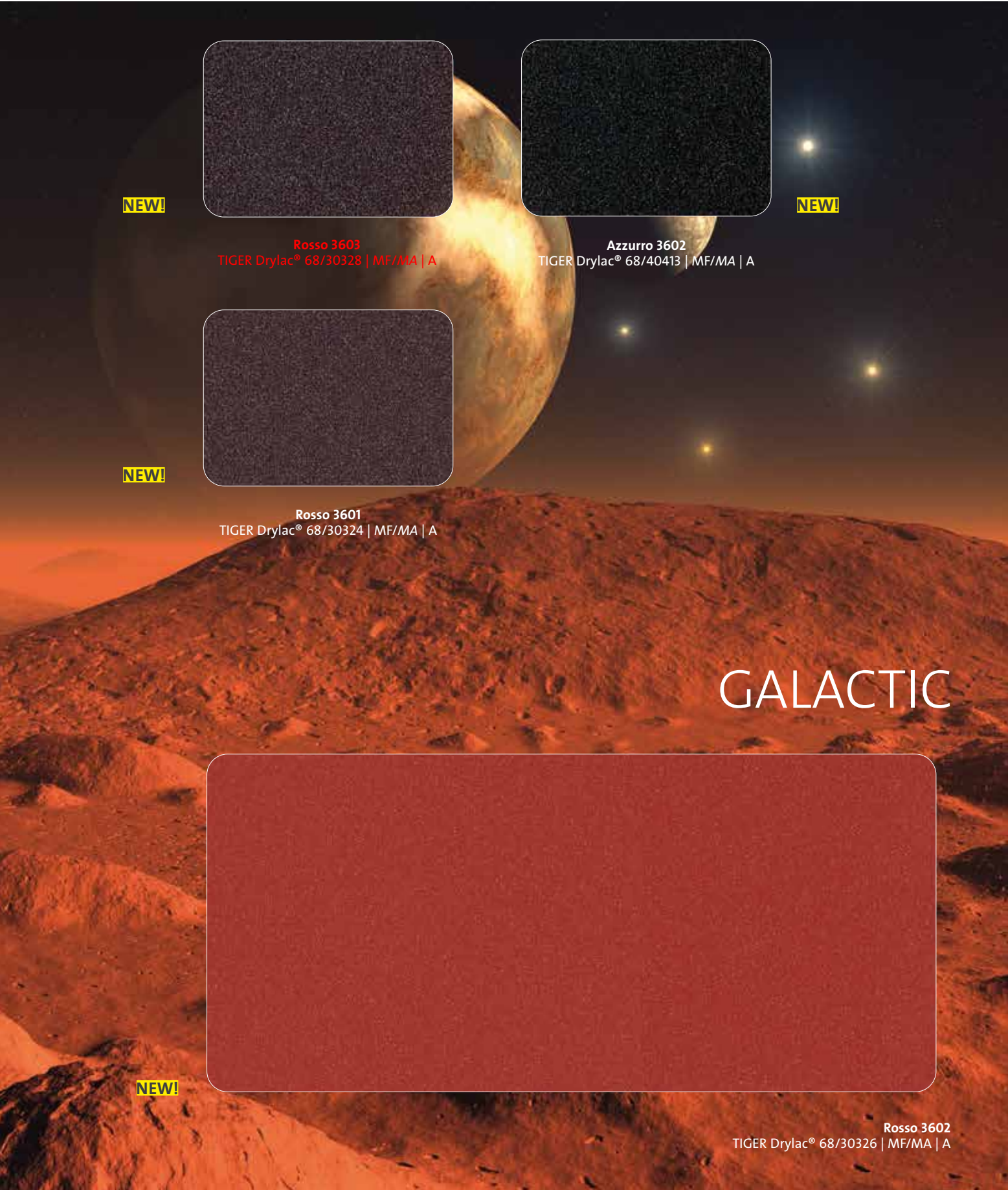


Products marked with RED text: Limited stock is available, please consult the stock indicator on our Webshop or contact TIGER at 1 (800) 243-8148. Once stock is depleted, product will be moved to Custom Order and minimum quantities of 500 kg/1,100 lb will apply.

ME/GL = metallic glossy | ME/SGL = metallic semi gloss | ME/MA = metallic matte | MF/MA = metallic fine texture matte | Prior to processing the appropriate product data sheets and technical information sheets must be consulted. **Application Categories A – D acc. to the Technical Information Sheet No. 44. All items available from stock**

TIGER Drylac® 3D Metallics

A new Dimension in Effect Powder Coatings



Actual Powder Coated Samples



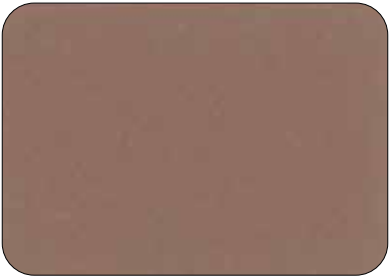
Marrone 3602
TIGER Drylac® 68/60806 | ME/MA | A



Marrone 3611
TIGER Drylac® 68/60994 | MF/MA | A



Marrone 3603
TIGER Drylac® 68/60810 | ME/MA | A



Marrone 3605
TIGER Drylac® 68/60812 | ME/MA | A



Marrone 3604
TIGER Drylac® 68/60808 | ME/MA | A



Marrone 3606
TIGER Drylac® 68/60818 | MF/MA | A



Marrone 3601
TIGER Drylac® 68/15185 | ME/SGL | A



ME/GL = metallic glossy | ME/SGL = metallic semi gloss | ME/MA = metallic *matte* | MF/MA = metallic fine texture *matte* | Prior to processing the appropriate product data sheets and technical information sheets must be consulted. **Application Categories A – D acc. to the Technical Information Sheet No. 44. All items available from stock**

Products marked with RED text: Limited stock is available, please consult the stock indicator on our Webshop or contact TIGER at 1 (800) 243-8148. Once stock is depleted, product will be moved to Custom Order and minimum quantities of 500 kg/1,100 lb will apply.

TIGER Drylac® 3D Metallics

A new Dimension in Effect Powder Coatings



Actual Powder Coated Samples



NEW!

Marrone 3612
TIGER Drylac® 68/30331 | MF/MA | A



NEW!

Deore 3607
TIGER Drylac® 68/20238 | MF/MA | A



Deore 3601
TIGER Drylac® 68/90464 | MF/MA | A

EXTRATERRESTRIAL



Marrone 3607
TIGER Drylac® 68/60835 | MF/MA | A



Marrone 3608
TIGER Drylac® 68/60820 | ME/MA | A



Deore 3604
TIGER Drylac® 68/90460 | ME/MA | A



NEW!

Marrone 3610
TIGER Drylac® 68/80488 | MF/MA | A



Marrone 3609
TIGER Drylac® 68/60833 | MF/MA | A



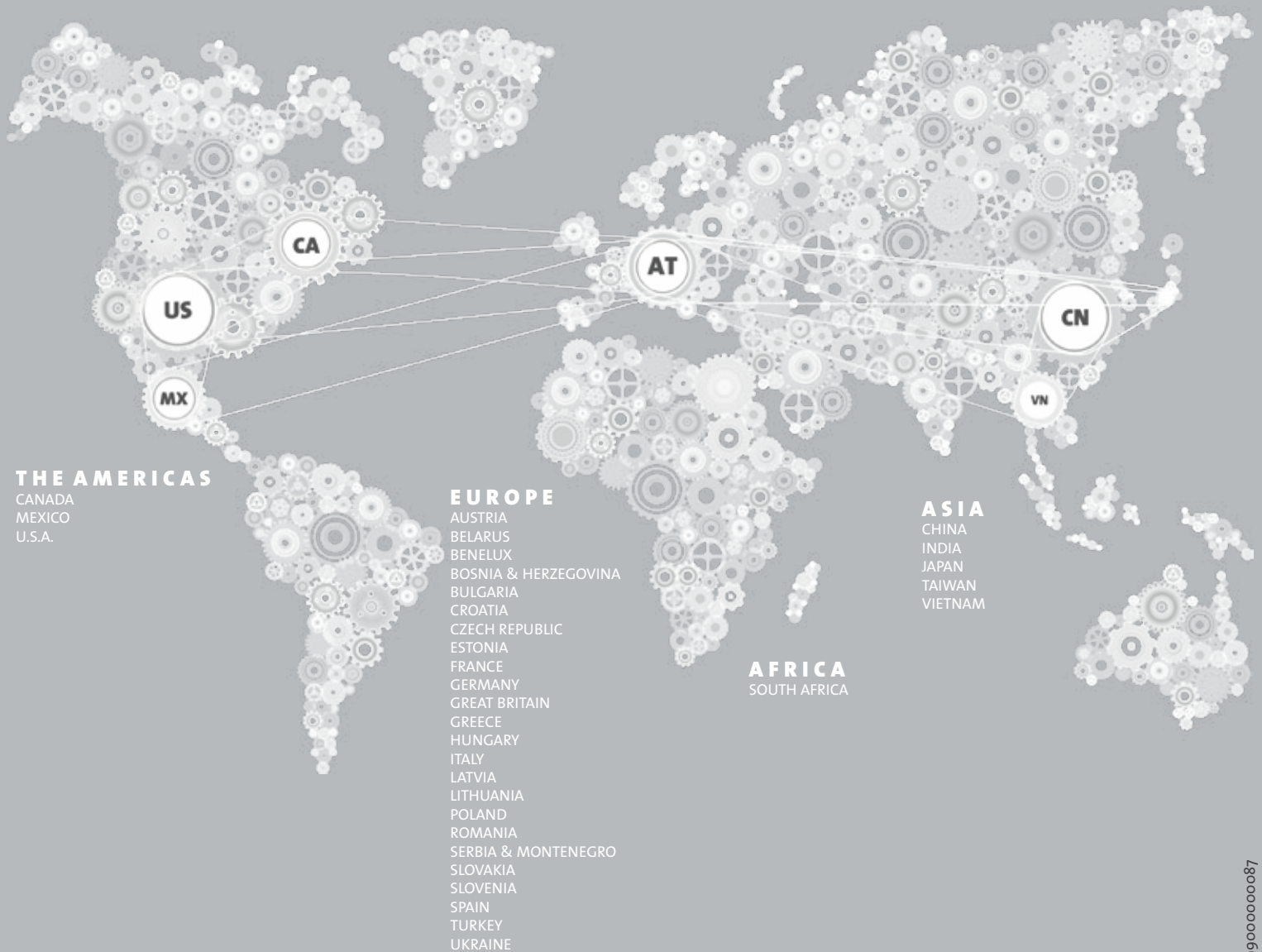
Deore 3606
TIGER Drylac® 68/90420 | ME/SGL | A



Products marked with RED text: Limited stock is available, please consult the stock indicator on our Webshop or contact TIGER at 1 (800) 243-8148. Once stock is depleted, product will be moved to Custom Order and minimum quantities of 500 kg/1,100 lb will apply.

ME/GL = metallic glossy | ME/SGL = metallic semi gloss | ME/MA = metallic matte | MF/MA = metallic fine texture matte | Prior to processing the appropriate product data sheets and technical information sheets must be consulted. **Application Categories A – D acc. to the Technical Information Sheet No. 44. All items available from stock**

TIGER WORLDWIDE NETWORK



999000000087

contact details available at
tiger-coatings.com



US/Canada: 1 (800) 243-8148
Mexico: 01 (800) 368-4437



NEW 3D Metallics

Now in Series 138!

TIGER Drylac® has combined our 3D Metallic technology with our Series 138 product chemistry to create a new line of flex-cure metallics. Our Series 138 3D Metallics are locally produced with fast lead times for quick delivery. TIGER 3D Metallics feature breathtaking, wet paint-like 3D effect with stunning depth, spatial clarity and unsurpassed brightness in one-coat!

Key Features & Benefits

- Excellent weather resistance
- Excellent UV-light resistance
- AAMA 2604 compliant
- Very smooth flow
- Good storage stability
- Full cure can be achieved as fast as 7 min**
- Underwriter Laboratories recognized component (UL approved)

Typical Applications

- Metal façades
- Steel constructions
- Stadium seating
- Residential windows and doors
- Patio furniture and garden equipment
- Railings
- Playground equipment
- Agriculture equipment
- External ship components, communication towers and doors
- Automotive sector

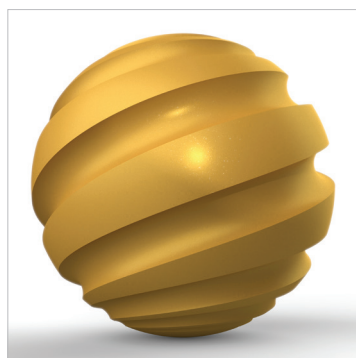
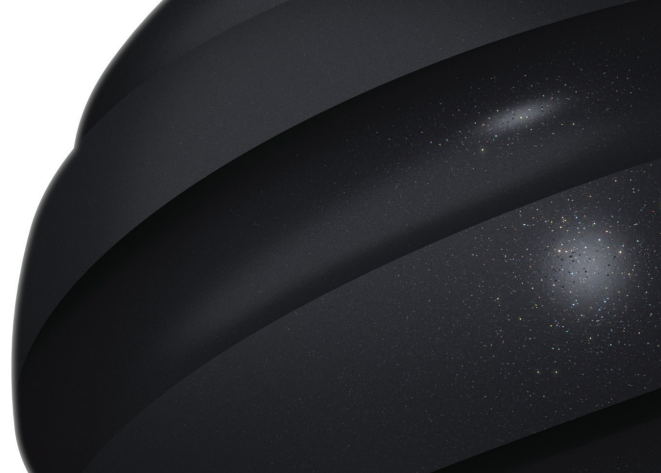
Product Details

- Polyester TGIC-Free
- Available in original 22 & 44 lb (10 & 20 kg) boxes and 5 lb (2.5 kg) minipack
- Consult the Product Data Sheet (PDS) for more details

Buy TIGER Drylac® Products Online NOW:
www.tiger-coatings.com/shop

TIGER 3D Metallics

Available 138 products



138/90420
Deore 3806
Metallic Smooth / Semi Gloss



138/10460
Bianco 3801
Metallic Smooth / Semi Gloss



138/10455
Bianco 3802
Metallic Smooth / Semi Gloss



138/80348
Mica 3801
Metallic Smooth / Semi Gloss



138/90466
Argento 3801
Metallic Smooth / Semi Gloss



138/71806
Argento 3806
Metallic Smooth / Semi Gloss



138/15185
Marrone 3801
Metallic Smooth / Semi Gloss

* The second digit of 3D Metallic product names produced in Series 138 has been adjusted from 6 (in Series 68) to 8 in order to help distinguish between the two series. Color, effect, and gloss will be equivalent.

** Please refer to the Product Data Sheet for detailed curing parameters

Buy TIGER Drylac® Products Online NOW:
www.tiger-coatings.com/shop