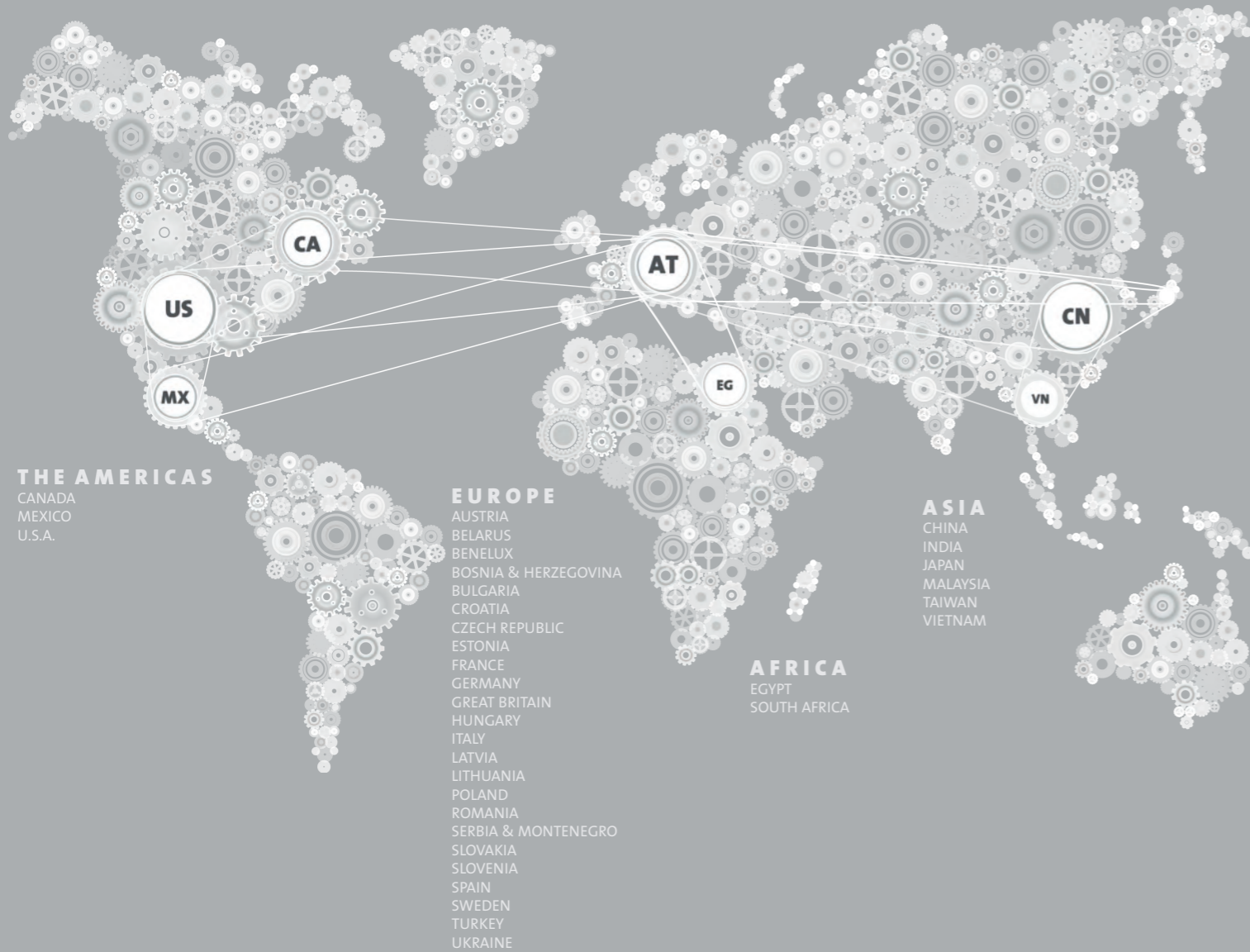


# TIGER WORLDWIDE NETWORK



## Series 29 Durable Powder Coatings



QUALICOAT Class I | GSB Standard

current address and other information at  
[www.tiger-coatings.com](http://www.tiger-coatings.com)



1555 / 05-18



## Elegance and quality in perfect harmony

The purpose of a facade is multifaceted and is somewhat comparable to that of the human skin. It gives the building its individual charm, separates the interior from the exterior and protects it against sun, wind and weather. Thus, when it comes to selecting the best-possible coating of the facade, apart from high quality, the design plays a crucial part too.

TIGER Drylac® Series 29 for metal facades and steel construction is subject to the strict quality and test regulations of GSB International and QUALICOAT. It stands out with its weather and abrasion resistance and its UV and corrosion stability. The wide range of colors, gloss levels, metallic and texture effects makes it an indispensable product for architects and builders who value durable surface finishing.

# TIGER Drylac®

Durable Powder Coatings for Metal Facades & Steel Construction



**Carbon 01 (approx. RAL 7021)**  
TIGER Drylac® 29/80070 | FS/MA



**Black Grey Metallic**  
TIGER Drylac® 29/71335 | MF/MA | C



**approx. DB 703 Metallic**  
TIGER Drylac® 29/80077 | MF/MA | C



**Bianco 02 (approx. RAL 9010)**  
TIGER Drylac® 29/10797 | FS/MA



**approx. Iron Glimmer P7**  
TIGER Drylac® 29/80081 | MF/MA | C



**Anthracite Grey Metallic**  
TIGER Drylac® 29/71334 | MF/MA | C



**Grey 250 S**  
TIGER Drylac® 29/71358 | MF/MA | B



**Silverglimmer**  
TIGER Drylac® 29/90092 | MF/MA | B



**approx. RAL 9006**  
TIGER Drylac® 29/91600 | ME/MA | A



**approx. RAL 9007 IG**  
TIGER Drylac® 29/90048 | ME/SGL | B



**approx. DB 702 IG**  
TIGER Drylac® 29/70588 | ME/MA | B



**Beige C-32**  
TIGER Drylac® 29/15400 | ME/MA | B



**Sun Gold**  
TIGER Drylac® 29/90249 | ME/SGL | B



**approx. RAL 9007**  
TIGER Drylac® 29/90147 | MF/MA | B



**approx. RAL 9006**  
TIGER Drylac® 29/90146 | MF/MA | A



**Silver**  
TIGER Drylac® 29/91041 | ME/SGL | B



**approx. DB 702**  
TIGER Drylac® 29/70790 | ME/MA | B



**approx. RAL 9007**  
TIGER Drylac® 29/91560 | ME/GL | B



**approx. RAL 9006**  
TIGER Drylac® 29/90045 | ME/SGL | A



**approx. Iron Glimmer P4**  
TIGER Drylac® 29/70129 | ME/MA | B



**approx. DB 703 HE**  
TIGER Drylac® 29/70271 | ME/MA | B



**Brown C-34**  
TIGER Drylac® 29/65650 | ME/MA | B



**Brown C-33**  
TIGER Drylac® 29/65680 | ME/MA | B



**approx. RAL 1035 Pearl Beige**  
TIGER Drylac® 29/90010 | ME/MA | B



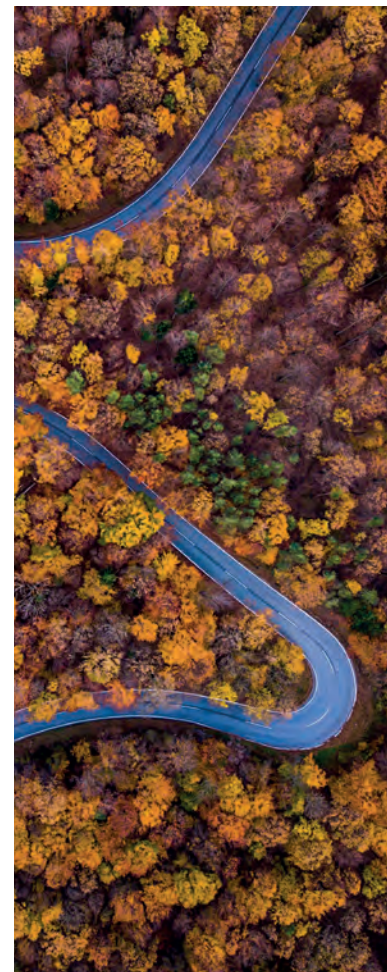
**approx. RAL 1036 Pearl Gold**  
TIGER Drylac® 29/90012 | ME/MA | B



**Ivory**  
TIGER Drylac® 29/15461 | MF/MA | B



**Terra Brown**  
TIGER Drylac® 29/60731 | MF/MA | B



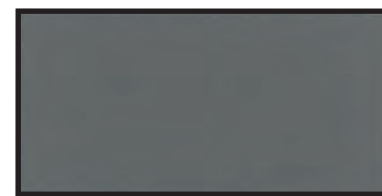
**approx. RAL 9022 Pearl Light Grey**  
TIGER Drylac® 29/70199 | ME/MA | B



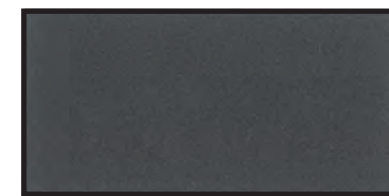
**approx. DB 701 IG**  
TIGER Drylac® 29/70587 | ME/MA | B



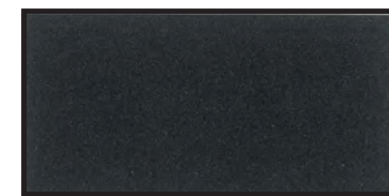
**Sparkling Iron Effect Light**  
TIGER Drylac® 29/70098 | ME/MA | C



**approx. DB 701**  
TIGER Drylac® 29/70103 | ME/MA | B



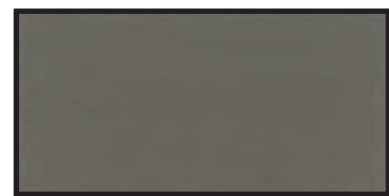
**approx. DB 703**  
TIGER Drylac® 29/82030 | ME/MA | B



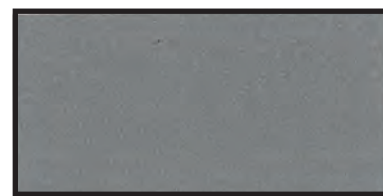
**approx. DB 703 IG**  
TIGER Drylac® 29/80056 | ME/MA | B



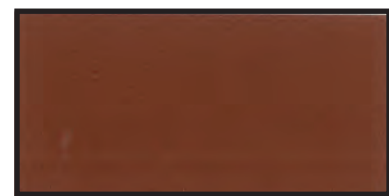
**Sparkling Iron Effect Dark**  
TIGER Drylac® 29/70105 | ME/MA | C



**approx. RAL 7048 Pearl Mouse Grey**  
TIGER Drylac® 29/70326 | ME/MA | B



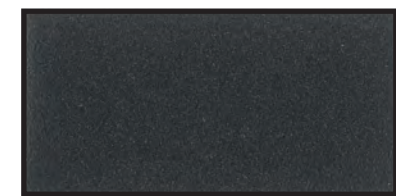
**approx. Iron Glimmer P2**  
TIGER Drylac® 29/70161 | ME/MA | B



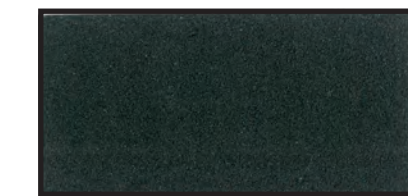
**approx. RAL 8029 Pearl Copper**  
TIGER Drylac® 29/60064 | ME/MA | B



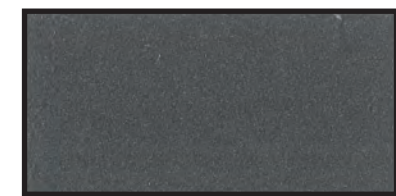
**Green Speckle**  
TIGER Drylac® 29/50370 | FS/MA | D



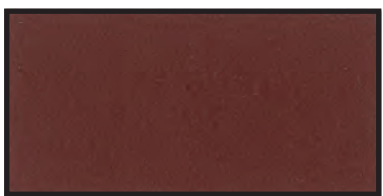
**Grey Brown**  
TIGER Drylac® 29/60674 | MF/MA | B



**Fire Green**  
TIGER Drylac® 29/50704 | MF/MA | B



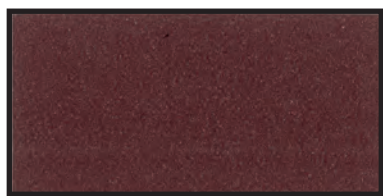
**Sparkling Iron Effect Medium**  
TIGER Drylac® 29/70786 | MF/MA | C



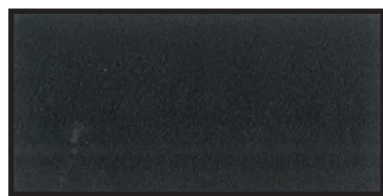
**Red Brown**  
TIGER Drylac® 29/30401 | MF/MA | B



**Sepia Brown**  
TIGER Drylac® 29/60740 | MF/MA | B



**Red Brown**  
TIGER Drylac® 29/30402 | MF/MA | B



**Marrone 05**  
TIGER Drylac® 29/70795 | FS/MA

All items available from stock. **CAUTION: VISION:** The colors/effects shown here will deviate from the original color/effect due to screen technology. Please consult the appropriate Product Data Sheets and Technical Information Sheets must be consulted. Metallic effects: please observe the instructions for Application Categories A - D acc. to the Technical Information Sheet No. 44.