

An exclusive selection of powder coatings, specifically designed for the lighting industry, meeting the essential requirements for a variety of colors, gloss levels and finishes. They provide batch-to-batch consistency, operator-friendly application, recyclability, higher first pass transfer efficiency and higher mileage than industry standards.

## Linear lighting

A select portfolio meeting the requirements for functionality and cost efficiency during the manufacturing process of a wide range of lighting fixtures and components produced with different configurations.

Suitable for surface mounted, wall mounted, recessed mounted, pendant mounted, cove mounted and other types of interior lighting fixtures.

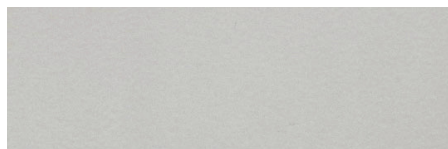
Gloss level *	Product name	Product ID	Finish
8-12	Easy White	449/11707	Smooth flat matte
8-13	Moon Star White	16/10061	Smooth flat matte
16-25	High Reflective White	349/12604	Smooth matte
16-25	Lighting White Matte	249/14040	Smooth matte
35-45	RAL 9016	338/10760	Smooth matte
35-45	White Semi Matte	39/10040	Smooth semigloss
80-95	HR White	849/10131	Smooth glossy
80-95	RAL 9016	549/11340	Smooth glossy
90-110	High Reflective White	49/10410	Smooth glossy
**	Bright White	249/13130	Fine texture flat matte
**	RAL 9016	89/10420	Fine texture flat matte



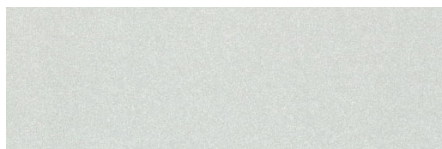
## Architectural lighting

Super durable AAMA 2604-compliant powder coatings exclusively formulated for exterior architectural applications. They meet the standards for durability and long lasting aesthetics in any interior and exterior architectural environment.

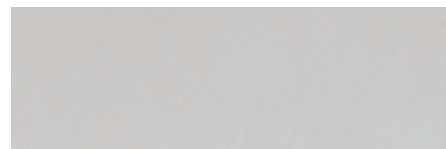
Surface finishes illustrated below as an indication of metallic and other finishes for landscape, building, street, step, pendant, ceiling mounted, wall mounted, recessed mounted and fan mounted lighting fixtures. Other surface finishes can be accessed through **TIGER Drylac®** color charts.



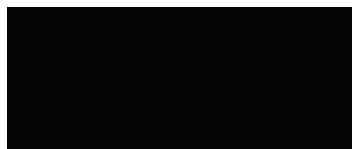
smooth matte metallic | 49/90500  
Silver Matte \*\*



smooth matte metallic | 38/91020  
Anodized Silver \*\*



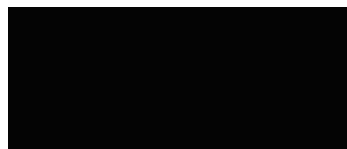
smooth flat matte metallic | 61/00015  
Clear Anodized Effect \*\*



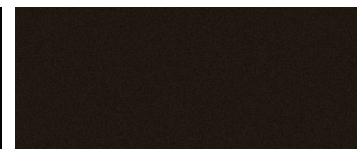
smooth flat matte | 61/80079  
Black Anodized Effect | gloss level 1-5 \*



smooth flat matte | 61/68001  
Dark Bronze Anodized Effect \*\*



smooth matte | 39/80020  
Black Matte | gloss level 20-30 \*



smooth matte metallic | 39/60020  
Bronze Matte Metallic \*\*

\* Gloss level according to ASTM 523 at 60° angle.

\*\* Metallic and fine textured gloss levels cannot be measured and are, therefore, accorded visually.

Colors illustrated in this Product Sheet should be considered as an indication only, they vary from the actual powder coatings. For an accurate color and finish assessment, it is recommended to obtain a powder coated panel from **TIGER Drylac®**.

## Lighting product guide

Depending on your lighting fixtures requirements, **TIGER Drylac®** may have a suitable product for the required application.

<b>Interior applications</b>	Polyester/epoxy	Series 89	linear
	Polyester/acrylic	Series 16	
<b>Interior and exterior (non architectural) applications</b>	Polyester TGIC	Series 39	linear and architectural
		Series 49	
<b>Interior and exterior (architectural) applications</b>	Polyester TGIC super durable	Series 38	architectural
	Polyester TGIC-free super durable	Series 61	

## About TIGER

A family-owned global manufacturer of surface finishes, **TIGER** is considered the fifth largest powder coating producer on a global level, counting 1,300 employees worldwide including 100 in technical functions.

**TIGER Drylac U.S.A., Inc.** was established in 1984. **TIGER Drylac Canada Inc.** was established in 1990. **TIGER Drylac Mexico S.A. de C.V.** was established in 2008. All **TIGER** manufacturing facilities are ISO 9001 and ISO 14001 certified.



USA | [customerservice.us@tiger-coatings.us](mailto:customerservice.us@tiger-coatings.us) | 800-243-8148  
 Canada | [customerservice.ca@tiger-coatings.com](mailto:customerservice.ca@tiger-coatings.com) | 1-800-243-8148  
 Mexico | [tigmexico@tiger-coatings.com](mailto:tigmexico@tiger-coatings.com) | 800-368-4437



A BETTER FINISH. FOR A BETTER WORLD.